



**EAST STROUDSBURG
UNIVERSITY**

Creating Opportunities

2022-23 Annual Report





As **ESU embarks** on this next chapter together, we are inspired by the opportunities that lie ahead. We must **work together** to create a brighter future for our students and our community as we continue to **uphold the values** that have made this institution what it is today. We must strive to **create a learning environment** that is inclusive and equitable, where every student has the chance to thrive and reach their full potential. Together, we are striving to **Create Opportunities** for our Community, for **Engagement** and for **Belonging**. >>>



Message from the President

As East Stroudsburg University continues to grow and evolve, the 2022-23 academic year was one of many achievements for our students and our institution.

As you look through this publication you will see some of the great things we accomplished this year, along with the opportunities we are creating for the future success of our students. Known for our commitment to academic excellence, inclusive excellence, and student success, the university continues to focus on initiatives to enhance its programs, facilities, and campus life.

With new student enrollment on the rise, our campus is preparing for growth with a new University Center. And our faculty and staff are engaging students with new labs, research opportunities, and hands-on learning.

Our nationally-recognized faculty are mentoring students and giving them experiential learning opportunities that will provide clear pathways to careers that will fulfill workforce needs in our region and the commonwealth.

Outside the classroom our students left their mark on the athletics fields, on the stage, and in the community this year. From NCAA national championships, musicals and concerts to the 10th Annual Economic Outlook Summit and the annual MLK Celebration Breakfast, Warrior Pride was felt on and off campus.

Inside this report, you will get a glimpse of what makes East Stroudsburg University Where Warriors Belong – where students, faculty, staff, and coaches have a place to teach, learn and grow.

A handwritten signature in black ink that reads "Kenneth Long". The signature is written in a cursive, flowing style.

Kenneth Long
President

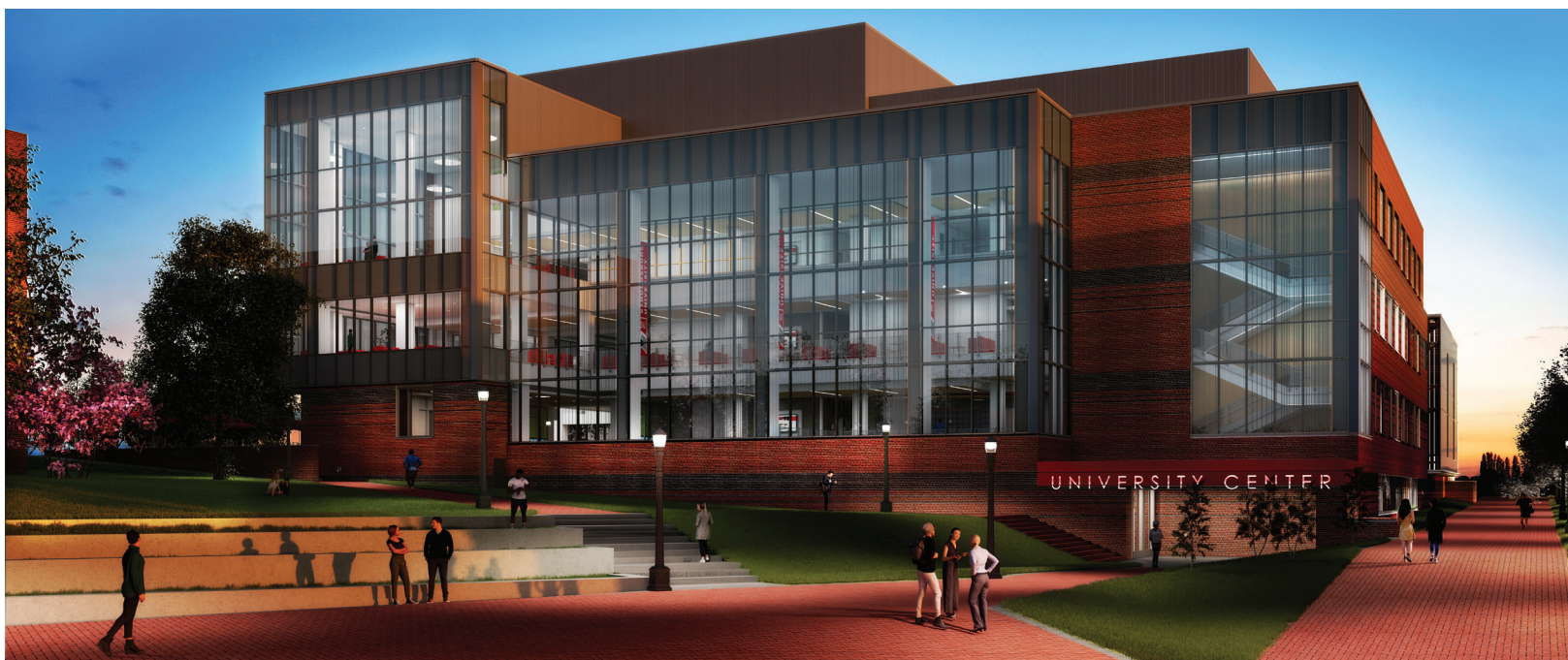


University Center Set to Transform Campus

Construction is underway on a new University Center, a 156,233-gross-square-foot, state-of-the-art building that will house a large ballroom, bookstore, theater, art gallery, food court, and offices for student clubs, including the student radio station, Veterans' Center and the Student Activity Association. Other spaces are earmarked for a commuter student lounge, career services, the multicultural/international center and LGBTQ center.

The building is designed to be energy efficient and environmentally friendly and ESU plans to apply for LEED certification – Leadership in Energy and Environmental Design. Among the project's green features will be an underground watering filtration system. The footprint of the current University Center and computing center will be converted into green space that includes an amphitheater.







ESU's Facility Enhancements

ESU's state-of-the-art Dale and Frances Hughes Foundation Community Health Education and Simulation Center, located in the DeNike Center for Human Services, opened in April 2023.

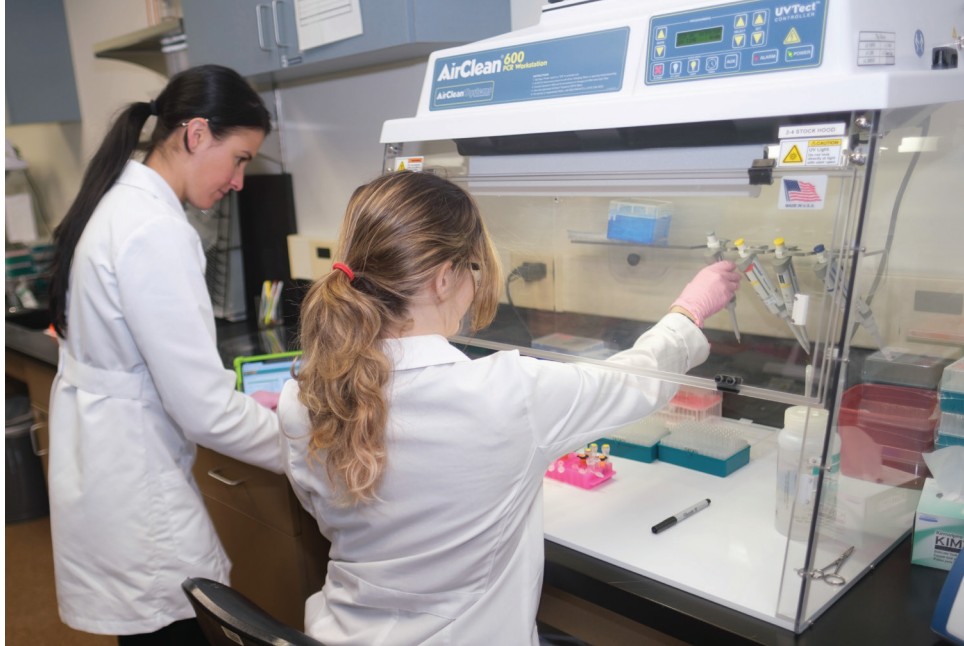
The center offers simulation and interprofessional practice opportunities for ESU students in the College of Health Sciences and local community healthcare organizations, including Lehigh Valley Health Network-Pocono.

Highlights include four "high-fidelity" manikins that can mimic human body functions. There is also an operating room space, a nursing station, and a high-tech control room where faculty can monitor several simulation scenarios.

Renovations have been completed on ESU's Aquaculture Lab, located in the Warren G. '55 and Sandra Hoeffner Science and Technology Center, a professional aquaculture laboratory that gives students studying marine science the opportunity to develop, build, and maintain a variety of aquaculturing systems.

The lab will enable students to gain valuable experience in designing, establishing, and maintaining a variety of aquatic culturing systems and learn aspects of animal care, including husbandry and fish health management.





PA Tick Research Laboratory

The Dr. Jane Huffman Wildlife Genetics Institute has received state appropriated funding for the fifth consecutive year to support free tick testing for PA residents. In 2022-23, the institute also secured \$1 million in additional state appropriated funding for Pennsylvania's first tick mitigation research project evaluating the use of an anti-tick vaccine on reducing ticks and tickborne pathogens.

The institute provides services to the public, state agencies, and ESU through tick testing, population genetic studies, forensic casework, and educational opportunities for students.





ESU's Year in Review

As we reflect on the past year, we can't help but be grateful for the many experiences and opportunities that have come our way to make ESU a stronger institution. We celebrate the strength and resilience of our students, faculty and staff that carried us through an incredible year as we showed why ESU is Where Warriors Belong.

WHERE WARRIORS BELONG



ESU's Pillars of Academic Excellence

ESU's Pillar undergraduate and graduate programs all have important ties to the surrounding educational, health, hospitality and business communities in the Poconos, through classroom and experiential learning.

The programs include valuable research opportunities for students mentored by nationally-recognized faculty researchers, which allow undergrad students to present their own research at regional and national conferences.

Embedded hands-on learning and high impact practices allow students to develop their professional skills. Many of the programs are nationally-accredited with exemplary retention

and graduation rates that provide clear career pathways and strong job prospects.

Experiential learning opportunities include the Dr. Jane Huffman Wildlife Genetics Institute, ESU's student-run design agency New Mind Design, the 3D Printing Lab, McGarry Communications Center TV Studio, the Community Health Education and Simulation Center, the Aquaculture Lab, the student-run P&J's Restaurant, the Career and Independent Living and Learning (CILLS) program, the Marine Science Consortium at Chesapeake Bay and the Autism Education Center. The teacher education program prepares students to work with all learners, including those in the field of special education.

College of Business & Management

› Hospitality, Restaurant & Tourism Management › Sport Management

“The constant preparation and encouragement from my professors makes me feel like I can take on the world and be the top person in any department. Anything and everything can and will happen in sports – but I’m prepared with tools for success to turn every opportunity into a positive outcome.

**Daryn Blackwell '22 M'23,
ESU Sport Management Major**



College of Arts & Sciences

- › Art + Media + Design
- › Biological Sciences
- › Psychology
- › Sociology, Social Work & Criminal Justice

“ Thanks to the experience that I have gained both in the lab and working closely with my professors, I know where I want to direct my interests. The atmosphere of learning and inquiry is so important. I've been able to pursue an advanced education and personal research in Biology.

Sherin Paul '24, ESU Biology Major



College of Education

- › Early Childhood Education
- › Elementary Education
- › Special Education

“ ESU has given me valuable opportunities for professional growth through a unique approach that includes coursework and fieldwork from the first year. Thanks to the practical learning materials and hands-on experiences in real-life classrooms, I'm ready for my career with the support of the faculty and staff.

JP Shupp '24, ESU Early Childhood and Special Education Major

College of Health Sciences

- › Athletic Training
- › Communication Sciences & Disorders
- › Exercise Science
- › Nursing
- › Public Health

“ ESU has greatly impacted the person I am today. The Exercise Science program uses multiple learning methods, urging us to not only focus on what we know but also to think outside the box to resolve complex issues and focus on the why. This has positively impacted how I look at the healthcare industry and my career.

Oluwatobi Adebayo '23, Physical Therapy Aide, St. Luke's Hospital, ESU Exercise Science Major



ESU's Commitment to Inclusive Excellence

As an institution of higher learning, we value diversity of thoughts, perspectives and ideas, while also embracing the uniqueness of our campus community. We are proud to have the largest diverse student population out of any of our PASSHE peers, with 44.2% of undergraduate students and 24.2% of graduate students being underrepresented minorities.

We continue to provide high impact and student-centered learning opportunities and programming through innovation and collaboration, and are committed to student support and success while celebrating our diversity, equity, and inclusion.

Resources like the Men of Color Alliance (MOCA), Women of Color Initiative (WOCI) and the Gender and Sexuality Center (GSC) provide support for students to transition into a university environment



and persist at ESU while empowering students and dismantling barriers.

As we strive for the relentless pursuit of Inclusive Excellence, we are committed and responsible to embrace, support and honor all of the unique identities, backgrounds, and experiences of our peers, neighbors, friends and families, as well as those we do not yet know. Inclusive Excellence challenges our entire campus – faculty, staff, students and administrators – to change our perceptions and practices in order to build strength and support for those who have felt overlooked for far too long.



44.2% of ESU undergraduate students and **24.2%** of graduate students are underrepresented minorities

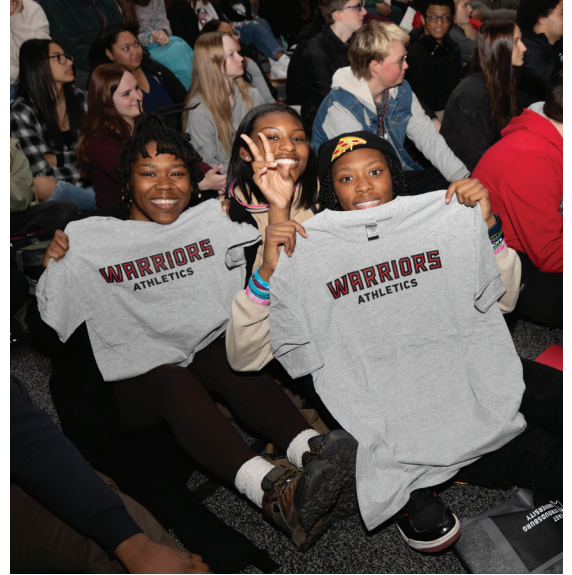




ESU's Commitment to the Community

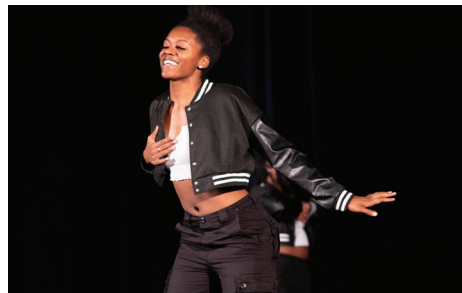
Our faculty, staff and students continue to contribute to our community – hosting community-focused events on-campus and participating in events throughout the Pocono Mountains.





ESU's Campus Life

ESU continues to provide high impact, student-centered learning opportunities and programming through innovation and collaboration. The Division of Campus Life and Inclusive Excellence is committed to promoting a sense of belonging and community.



2022-2023 Grant Funding

External Awards

\$7,135,369 AWARDED IN EXTERNAL FUNDING

8 awards
were funded from
state agencies



11 awards
were funded from
federal agencies



17 awards
were funded from
private agencies



6 awards
were funded
from PASSHE



38 PIs and CO-PIs
submitted
56 proposals



31 PIs and CO-PIs
were funded for
43 awards

External Grant Awards 2022-2023

University Divisions
and Affiliates
\$2,969,437

College of Health Sciences
\$32,000

College of Education
\$1,349,375

College of Business
and Management
\$2,173,351

College of Arts and Sciences
\$611,206

Internal Awards

\$68,805 AWARDED IN INTERNAL FUNDING

By the Numbers

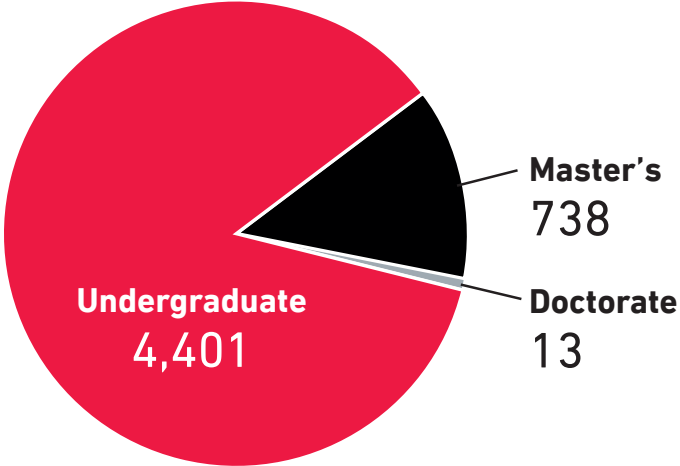
**FALL 2022
ENROLLMENT TOTAL**
5,152

**Underrepresented
Minority Students
(Undergraduate)**
43.1%

**Students who receive
financial aid**
86.5%

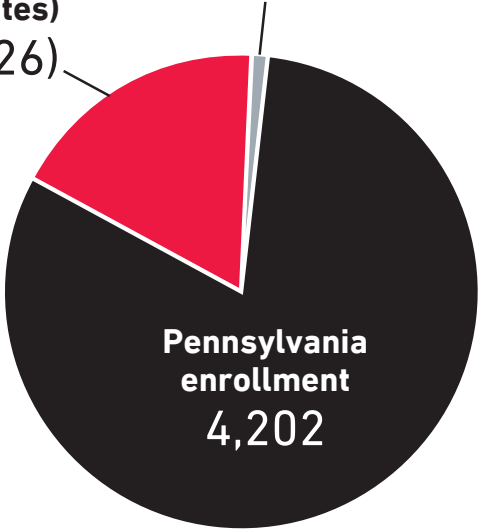
**Pell Awards
(Undergraduate)**
38.2%

**First generation
students**
30%



**Out-of-State enrollment
(number of states)**
891 (26)

**International enrollment
(number of countries)**
59 (21)



TOP 10 PA COUNTIES BY ENROLLMENT

Monroe ▶ 1,202	Montgomery ▶ 190
Northampton ▶ 553	Bucks ▶ 143
Philadelphia ▶ 281	Luzerne ▶ 108
Lehigh ▶ 237	Lackawanna ▶ 99
Pike ▶ 225	Carbon ▶ 78

FRESHMAN CLASS PROFILES

	2021	2022
Enrollment	679	1,153
Average HS GPA	3.23	3.13
College of Arts & Sciences	249	479
College of Business & Management	135	222
College of Education	38	74
College of Health Sciences	124	226
Undeclared or Meta Majors	133	152



STUDENT-ATHLETE ACADEMIC ACHIEVEMENT

Average Cumulative GPA
3.23

Total # of Student-Athletes
648

Cumulative GPA of Student-Athletes
3.0 – 367, 69.3%
3.5 – 218, 41.1%

4.0 GPA for Spring 2023 Semester
68

(LARGEST STUDENT-ATHLETE
POPULATION IN PASSHE)

TOP 10 MAJORS BY UNDERGRADUATE ENROLLMENT

Business Management ▶ 376

Psychology ▶ 322

Biology ▶ 275

Undeclared ▶ 269

Criminal Justice ▶ 246

Exercise Science ▶ 244

Early Childhood Education ▶ 201

Sport Management ▶ 176

Nursing ▶ 173

Athletic Training ▶ 158

\$ RESEARCH AND INNOVATION IN 2022-23 \$4,977,999

Alumni
38,960

Alumni in PA
28,320

Total Donors
in 2022-23
2,848

Total Gifts \$
in 2022-23
\$9,580,446

Scholarships
in 2022-23
734

Scholarship \$
in 2022-23
\$1,109,524



ESU EAST STROUDSBURG UNIVERSITY

**WHERE COURAGE
FINDS CONFIDENCE**

ESU.edu





COUNCIL OF TRUSTEES

L. Patrick Ross '67, *Chair*
John Pekarovsky III '07, *Vice Chair*
Paul E. Shemansky '96 M'01 M'04, *Secretary*
Edward P. Abraham
Frank A. Epifano
Thomas J. Grayuski '84
Damali Jackson '25
Bruno S. Klaus
Marcus S. Lingenfelter '95
Tina L. Nixon '89
Tameko Patterson
Daniel Greenstein, *Ex-Officio*

PRESIDENT'S COUNCIL

Kenneth Long, *President*
Margaret Ball, D.M.A., *Provost and Vice President for Academic Affairs*
Miguel Barbosa, *Chief of Staff and Vice President for University Relations*
Donna Bulzoni, *Chief Financial Officer*
Lorna J. Hunter, Ph.D., *Vice President for Enrollment Management*
Mary Frances Postupack, *Vice President for Economic Development and Entrepreneurship*
Michael C. Sachs, J.D., *Interim Vice President for Administration and Accreditation*
Robert Smith, Ed.D., *Chief Information and Technology Officer*
Santiago Solis, Ed.D., *Vice President for Campus Life and Inclusive Excellence*

DEANS

Nieves Gruneiro-Roadcap, M.F.A., *Dean, College of Arts and Sciences*
Sylvester Williams, J.D., *Dean, College of Business and Management*
Brooke Langan, Ed.D., *Dean, College of Education*
Chad Witmer, Ph.D., *Interim Dean, College of Health Sciences*
Jennie Smith, Ed.D., *Dean of Student Life*

ATHLETIC ADMINISTRATION

Allen G. Snook Jr., D.H.Sc., *Director of Athletics*
Sarah Ross, *Associate Athletic Director for Student Success/Senior Woman Administrator*
James Bandy, *Associate Athletic Director for Compliance*
Shawn Munford, Ph.D., *Faculty Athletics Representative*



EAST STROUDSBURG UNIVERSITY

200 Prospect Street • East Stroudsburg, PA 18301 • ESU.edu